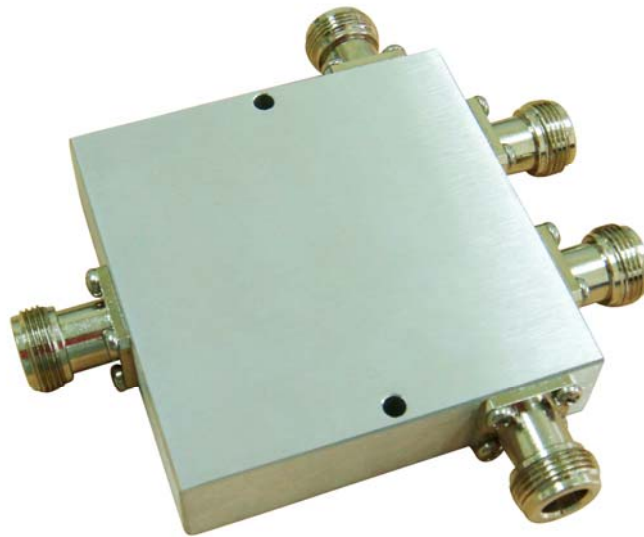


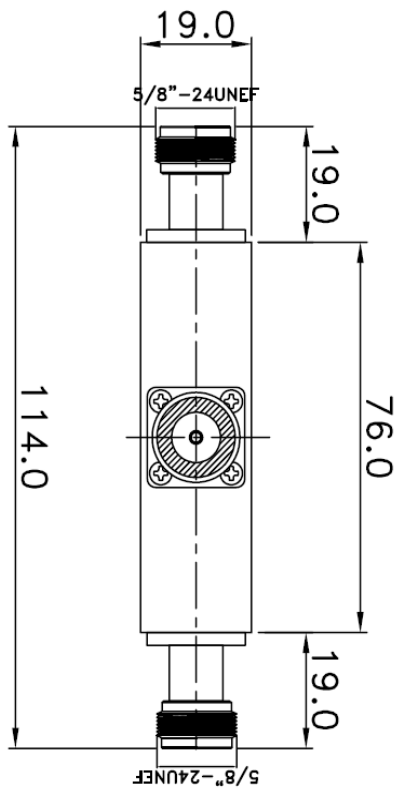
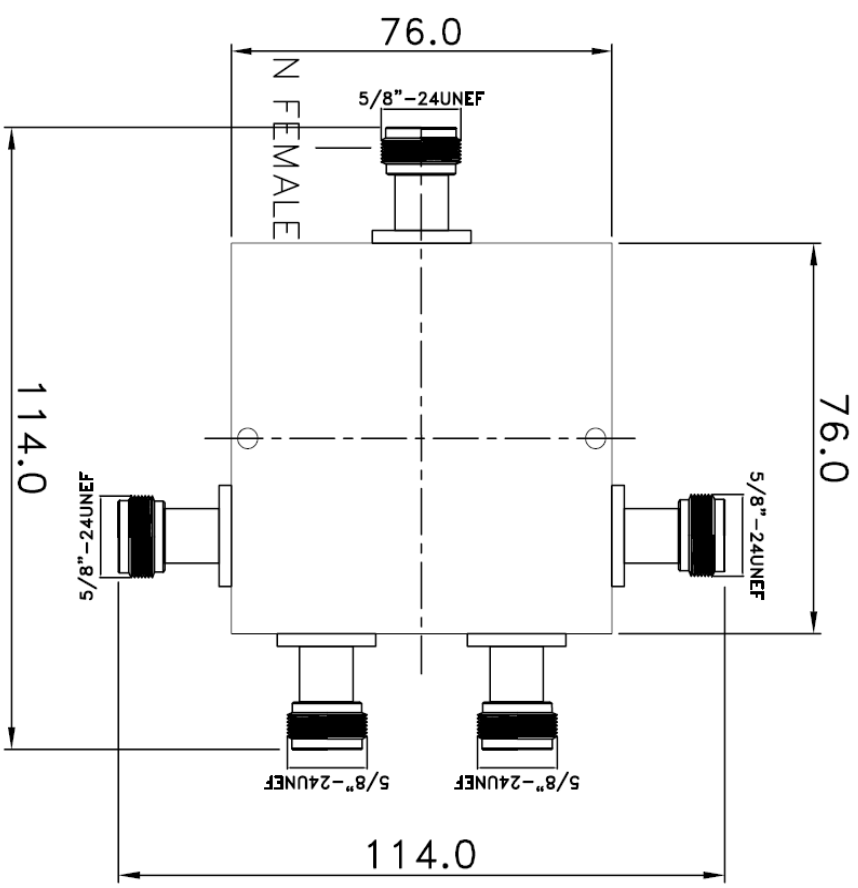
## 700-2700MHz 1 TO 4 WAYS SPLITTER FOR N FEMALE



Specification		
Model No.	SP-0727-03	
Description	1 TO 4 Ways Splitter	
Frequency Range (MHz)	700 -2700MHz	
Insertion Loss (dB)	$\leq 7.2$	
Amplitude Balance (dB)	$\leq 0.3$	
Phase Balance	$5^\circ$	
Standing Wave	VSWR (in)	$\leq 1.5$
	VSWR (out)	$\leq 1.5$
Isolation (dB)	$\geq 22$	
Power (W)	$\geq 30$	
Dimension (mm)	L114 x W114 x H19mm	
Port Connectors	N Female	
N.W (g)	325g	

REV	DESCRIPTION	DRAWN	DATE

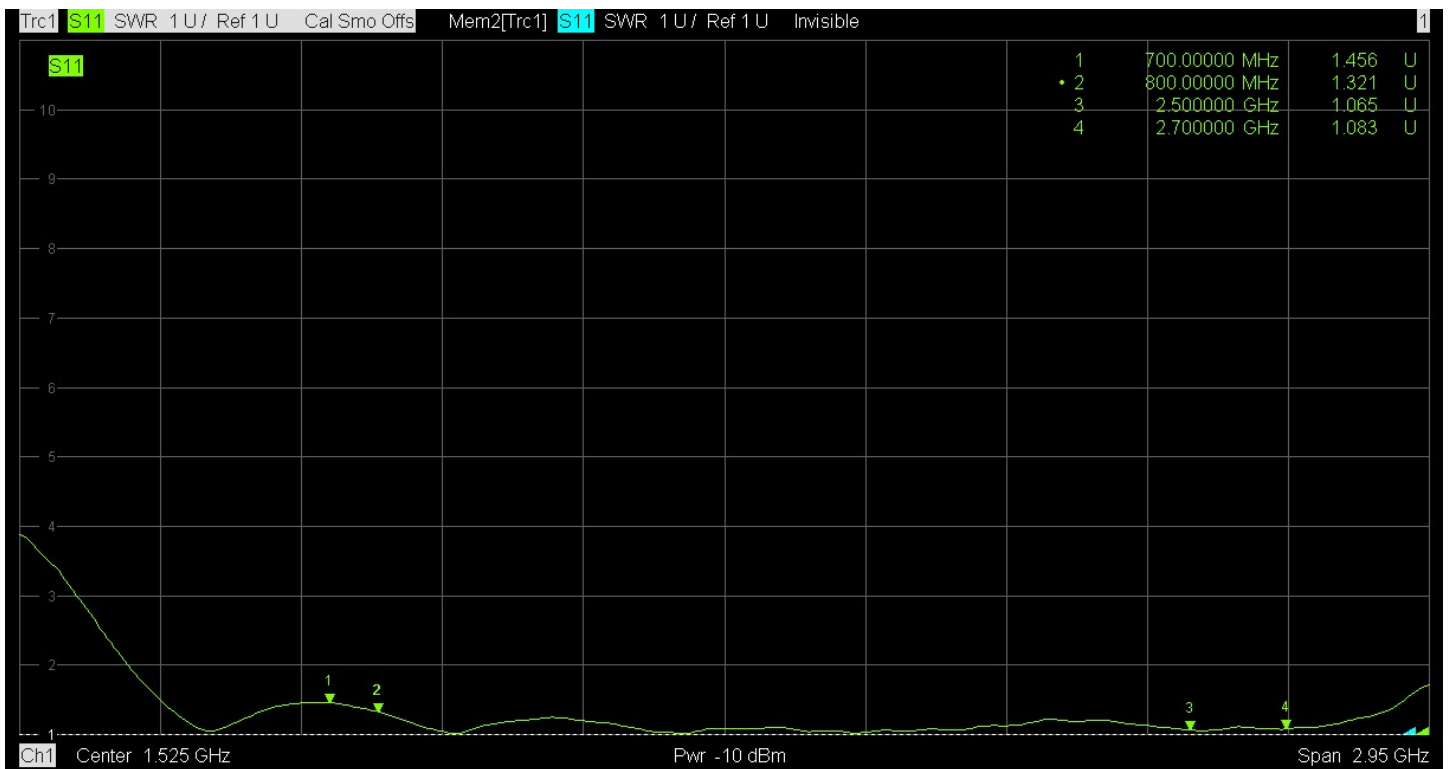
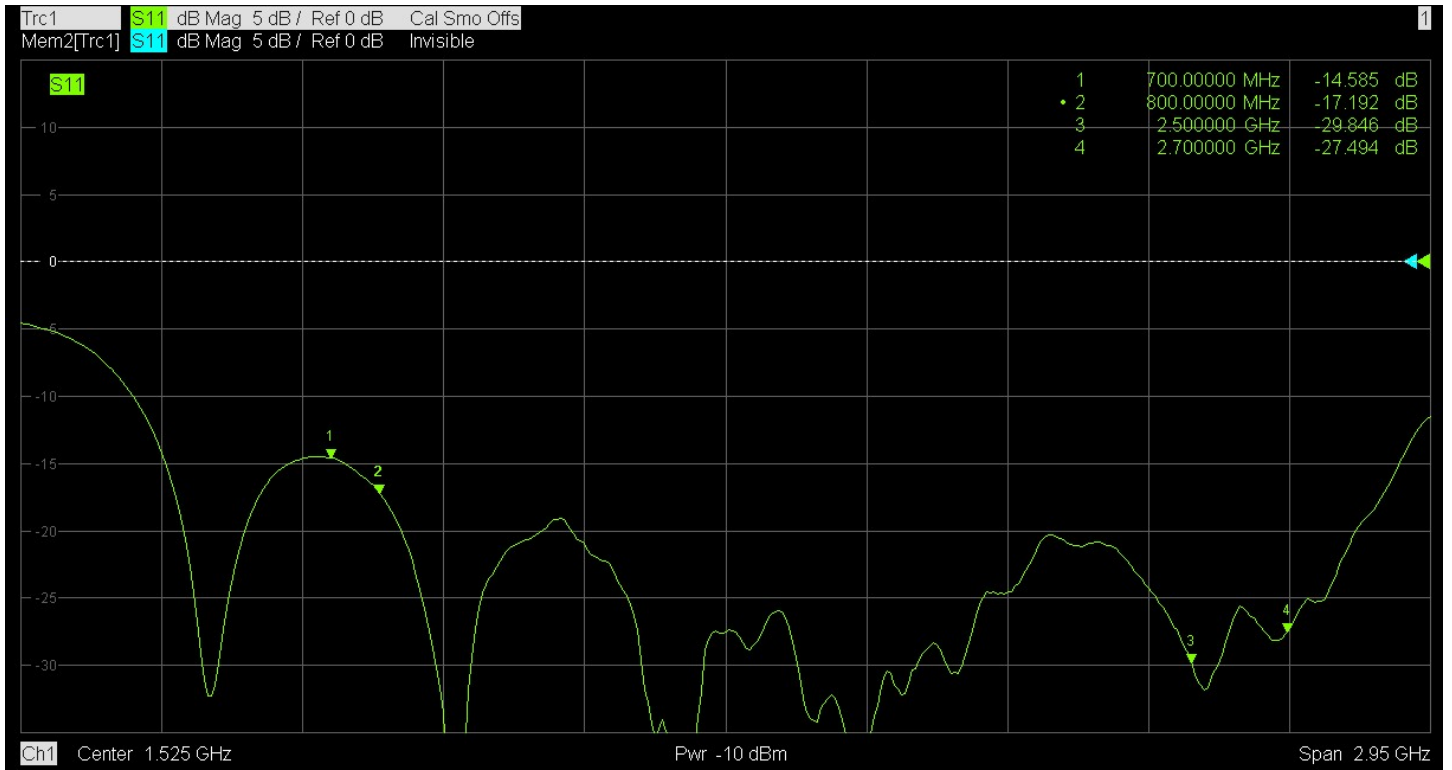
700-2700MHZ 1 TO 4 WAYS SPLITTER FOR N FEMALE



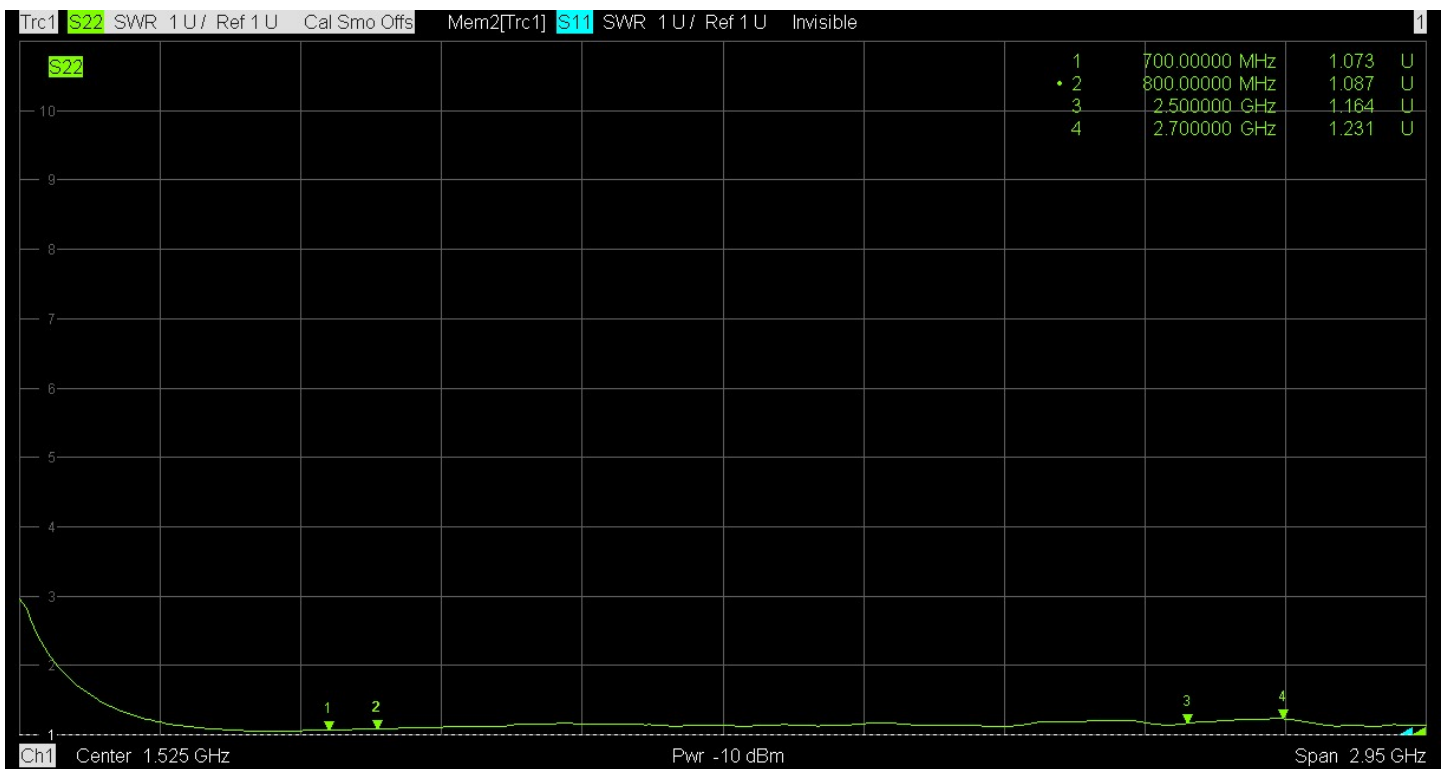
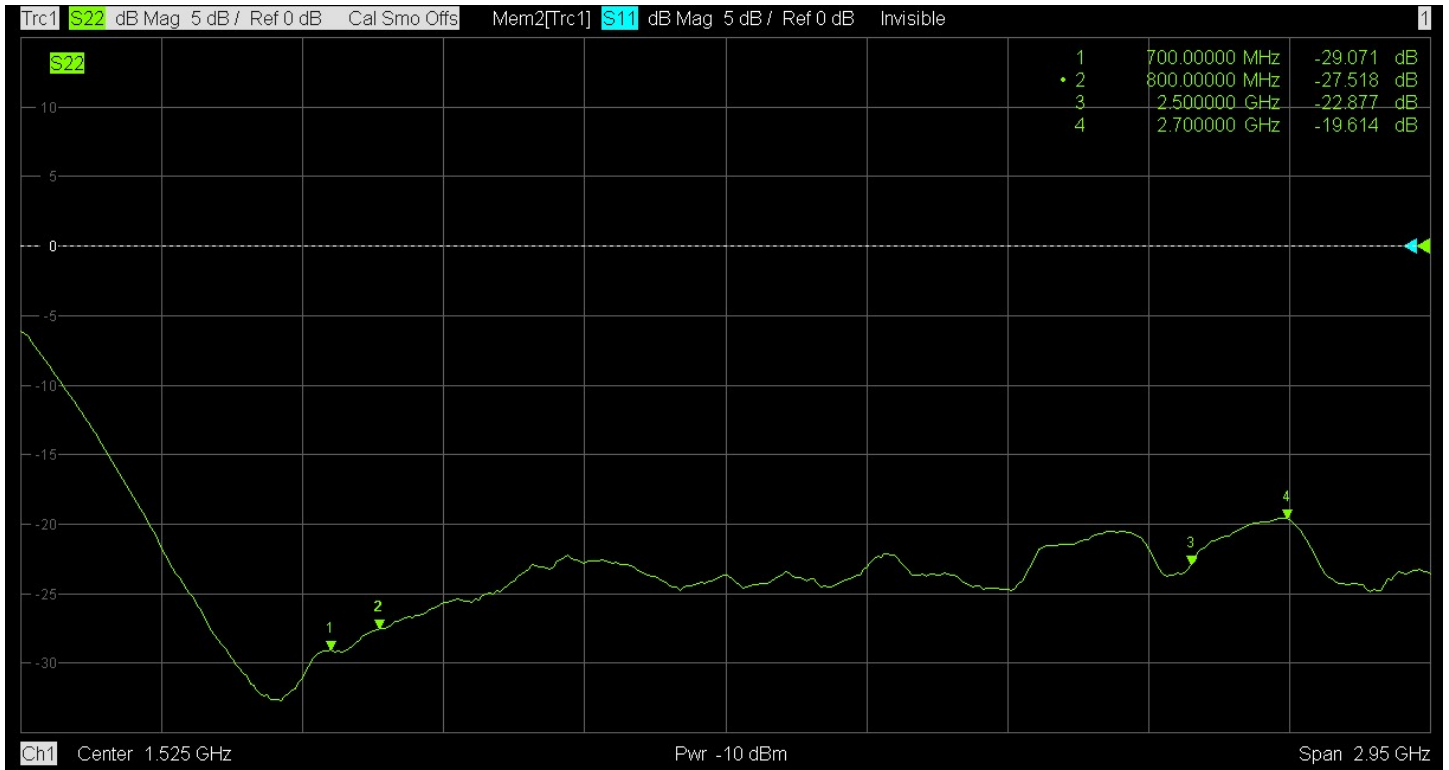
7	Power (W) : $\geq 30$
6	Port Connectors : N FEMALE
5	Isolation (dB) : $\geq 22$
4	Phase Balance : $5^\circ$
3	Amplitude Balance (dB) : $\leq 0.3$
2	Insertion Loss (dB) : $\leq 7.2$
1	Frequency Range (MHz) : 700-2700 MHz
NO	Description

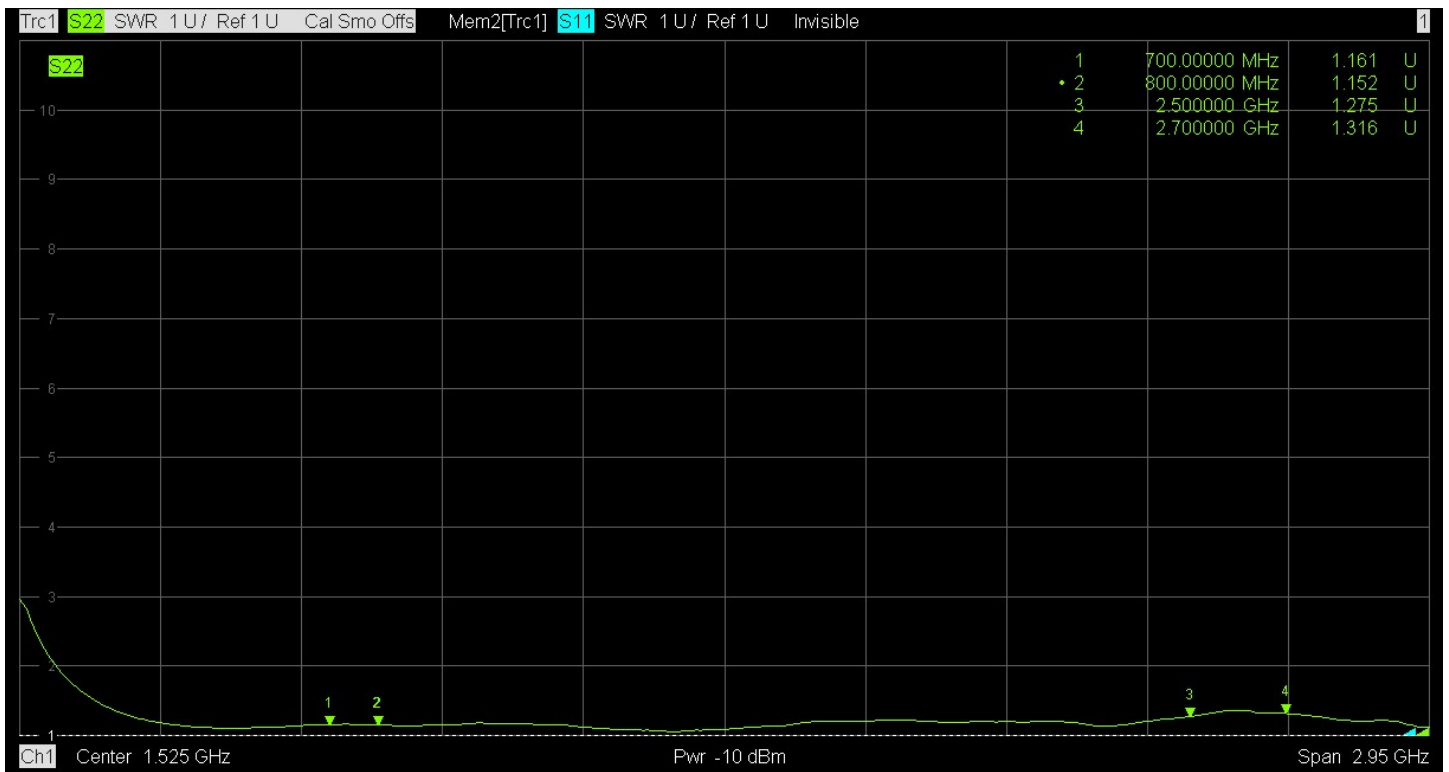
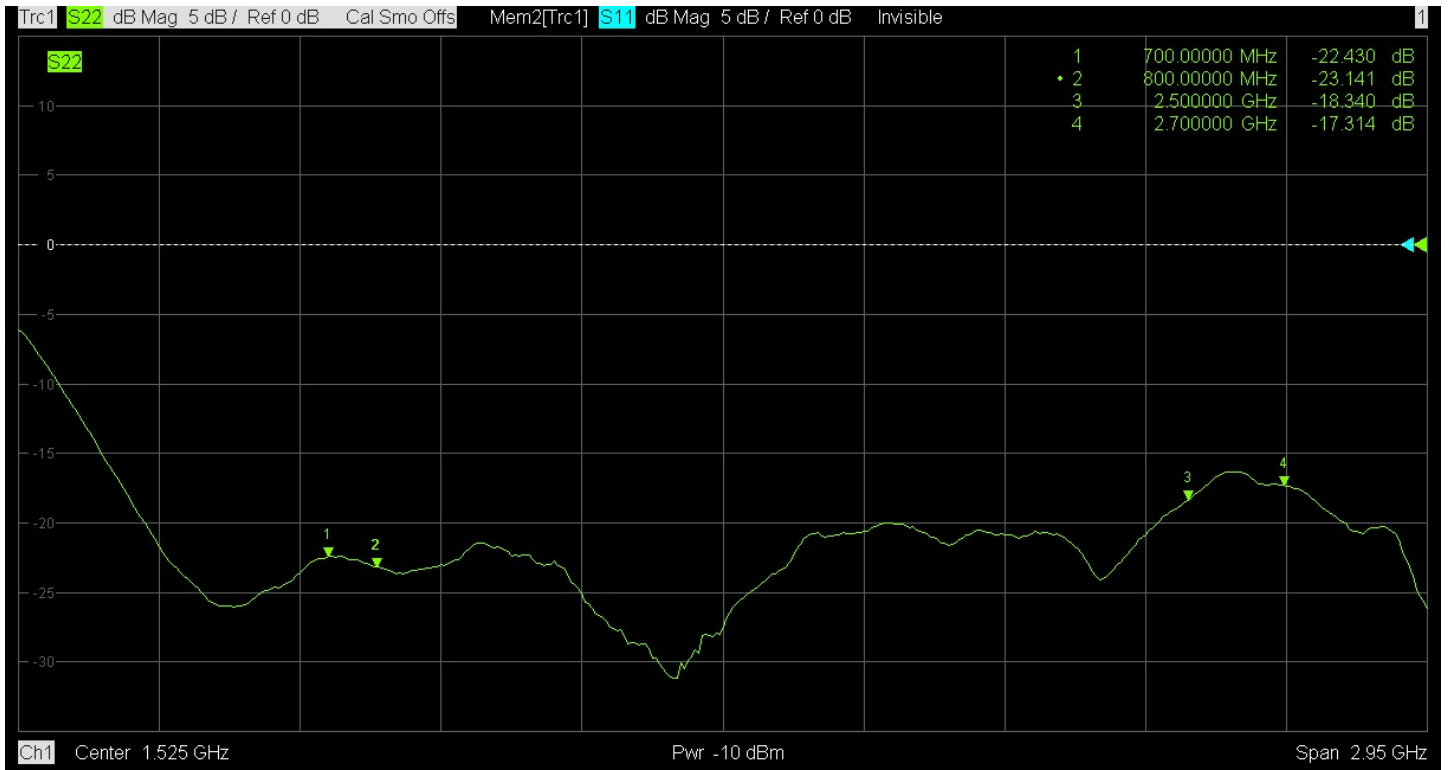
UNLESS OTHERWISE SPECIFIED		* MAJOR DIMENSION		APPROVED	
1 REMOVE ALL BURRS 2 BREAK ALL CORNERS & EDGES CO.15 MAX. 3 CHAMFER 1ST & LAST THREADS 45° 4 DIAMETERS ON COMMON CENTERS TO BE CONCENTRIC WITHIN 0.1 TLR 5 ALL DIMENSIONS ARE AFTER PLATING.		UNLESS OTHERWISE NOTED TOLERANCES 0.3-6 = $\pm 0.2$ 6-30 = $\pm 0.4$ 30-120 = $\pm 0.6$ 120-315 = $\pm 1.0$ ANGLES = $\pm 1^\circ$		CHECKED DRAWN andrew	
SCALE	5/1	UNIT	MM	DRAWN DATE	03/07/04
TITLE			DRAWING NO.		
700-2700MHz 1 TO 4 WAYS SPLITTER FOR N FEMALE			SP-0727-03		
REV			A		

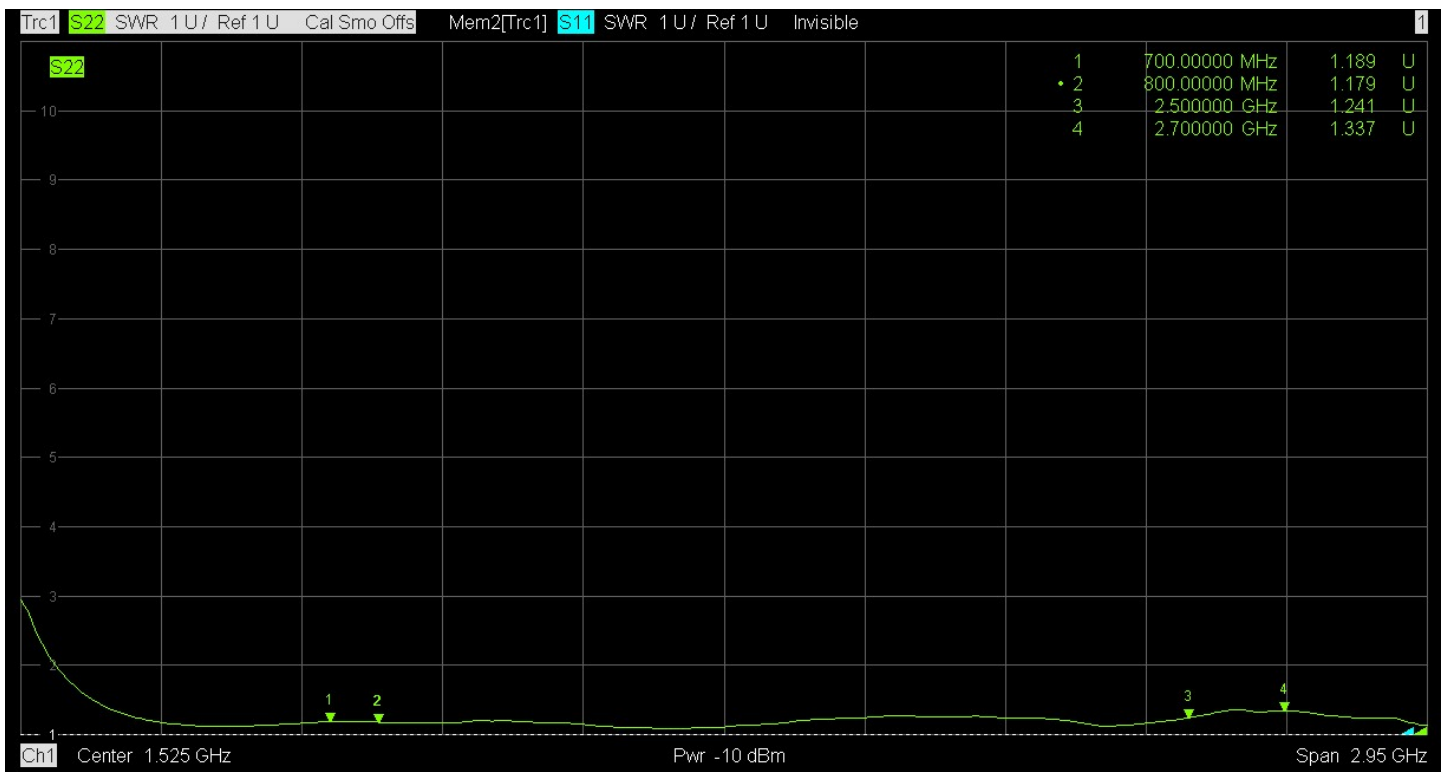
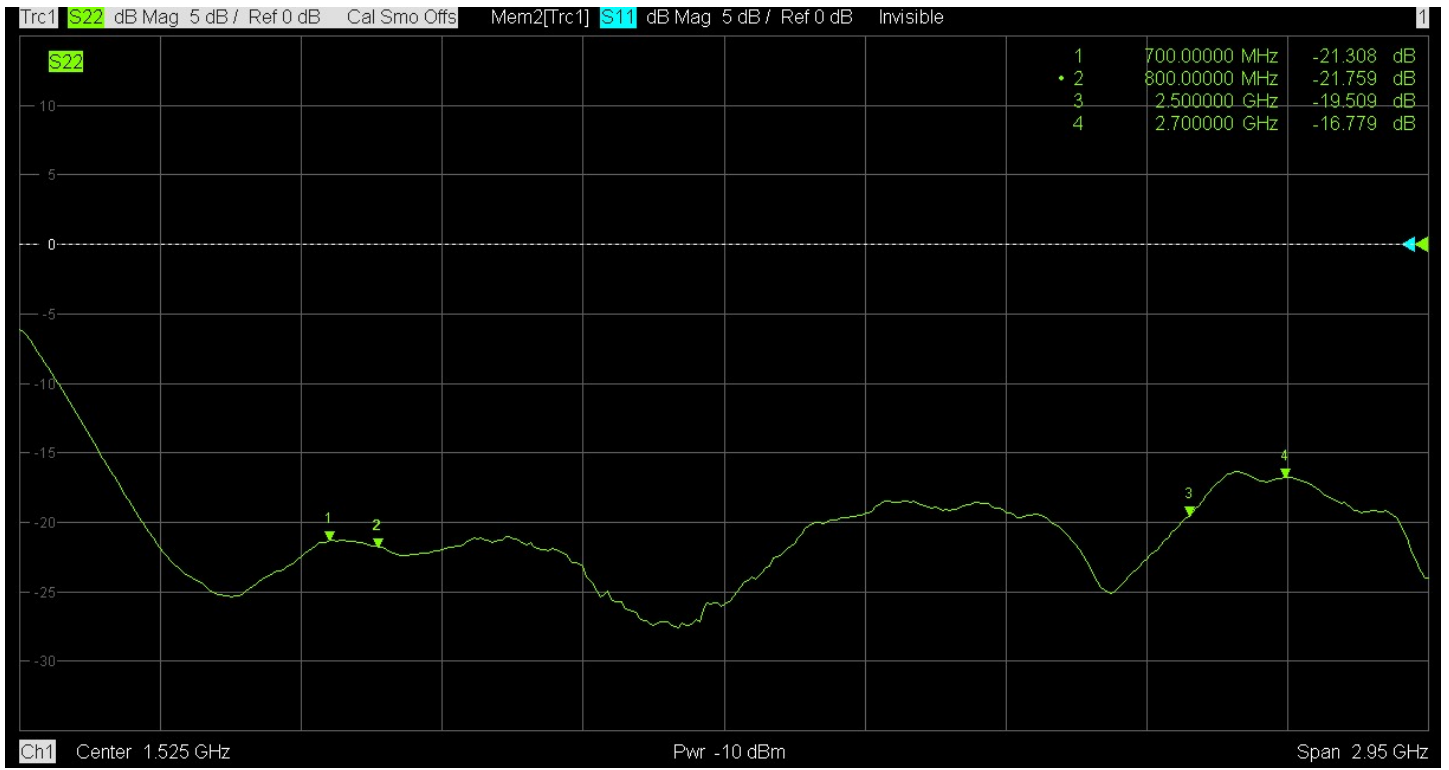
# S11

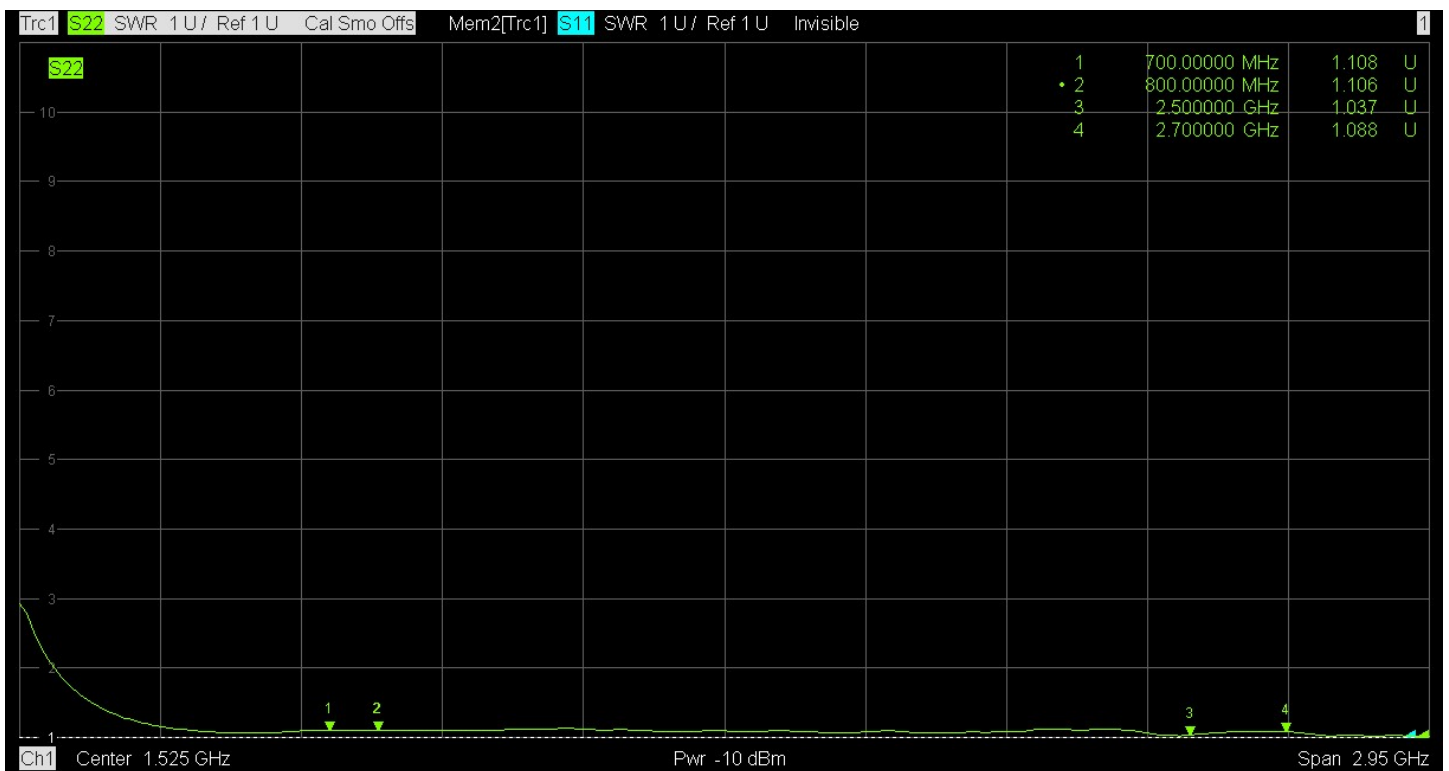
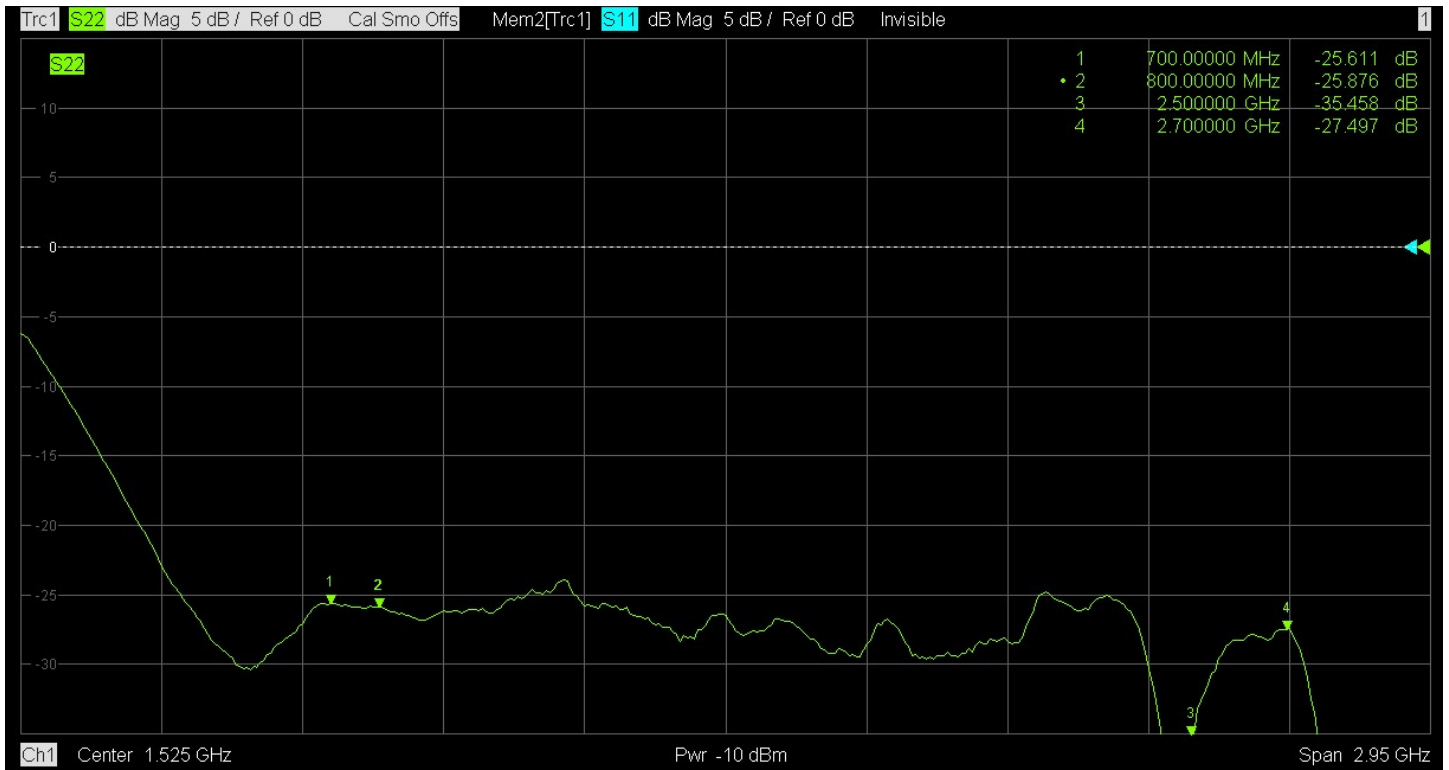


S22

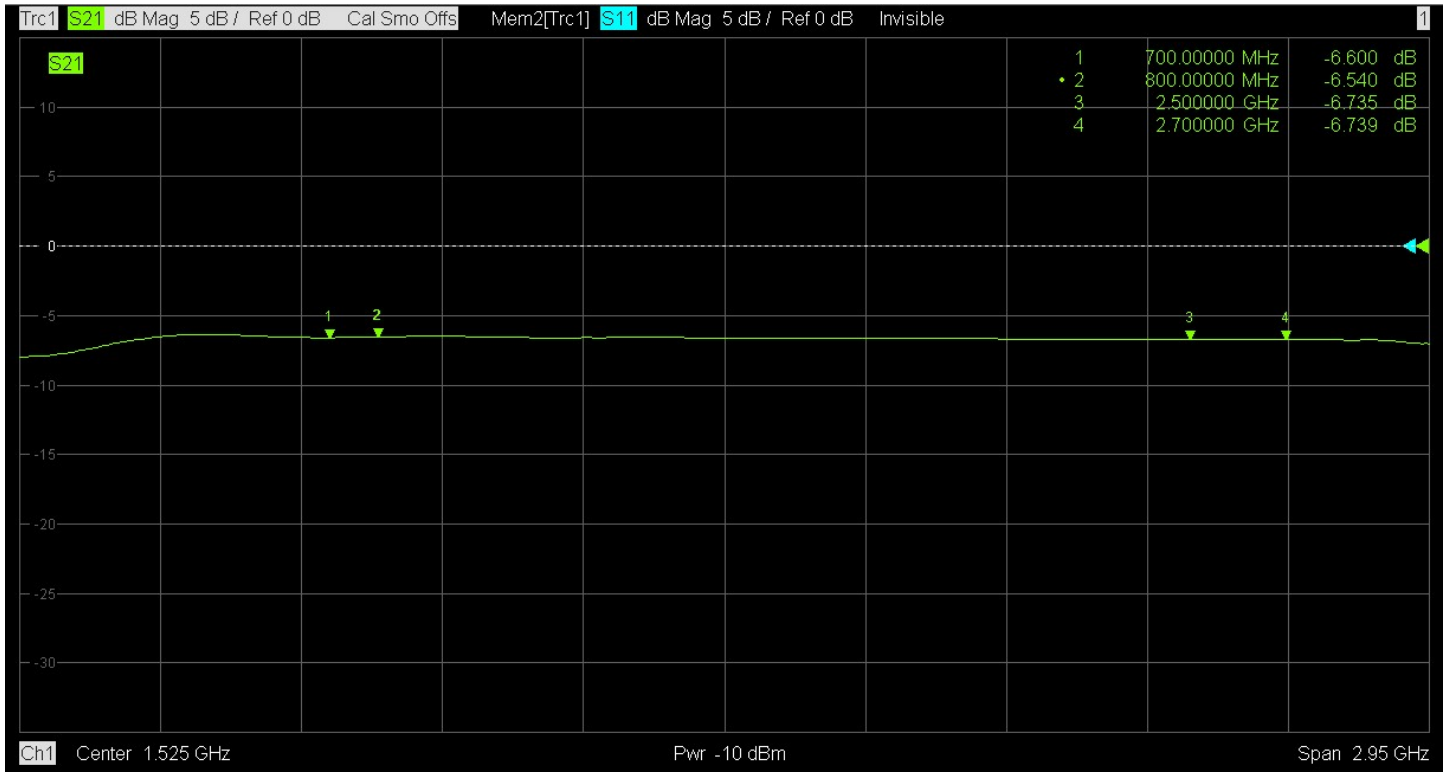




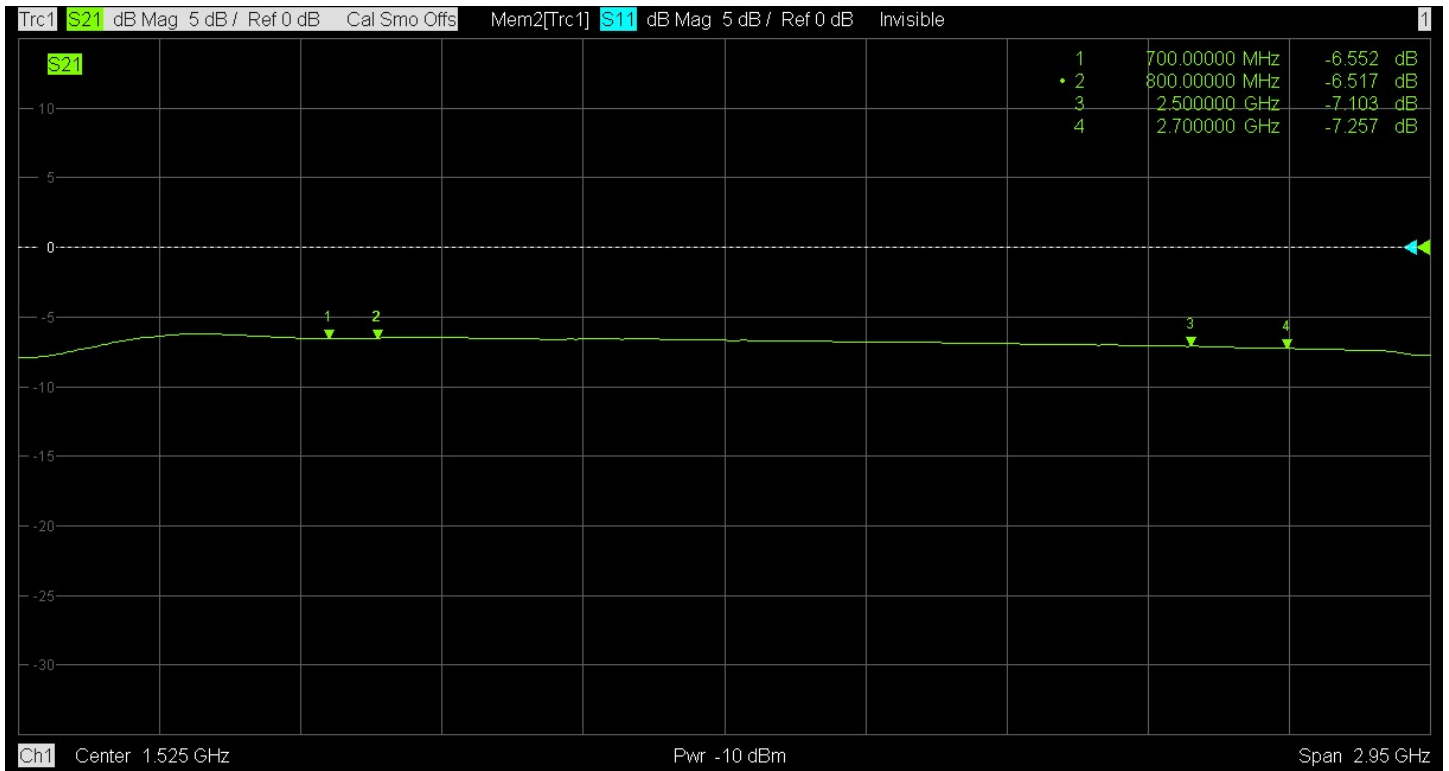




# S12

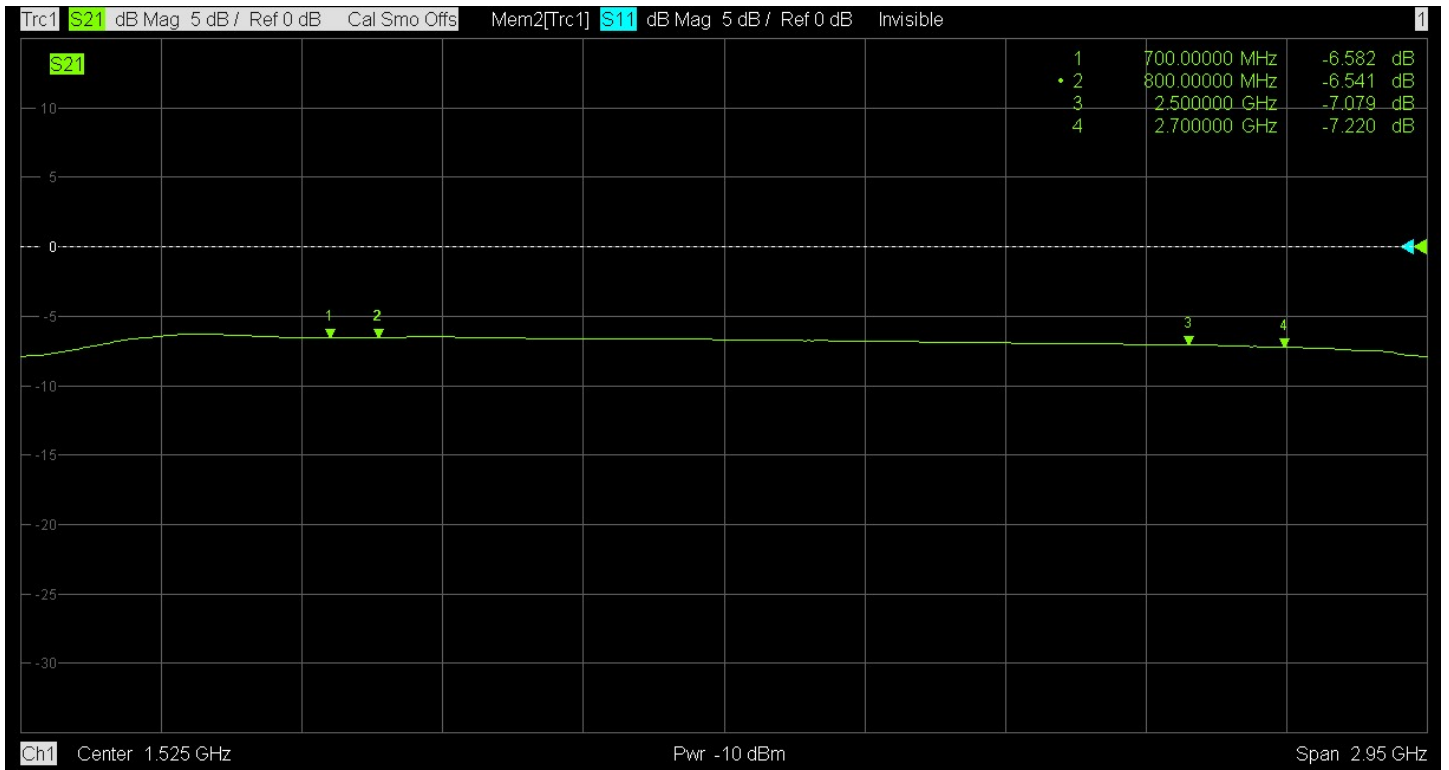


# S13





# S14



# S15

